



PARENT MANUAL

Pump-Kin Patch Child Care Centre

**Third floor
150 6th Ave
Calgary, AB
T2P 3E3**

Phone: 403.296.3549

Welcome to Kids@ Churchill Park

We are very happy that you have chosen to enroll your child at the Kids@ Churchill Park, Pump-kin Patch Child Care location. We are certain that the experience will be positive for your family.

This handbook is designed to provide parents with a summary of what you and your child can expect at Pump-kin Patch Child Care including care, curriculum, and operational practices.

Kids@ Churchill Park is a non-profit child care and family support agency providing quality child care experiences and early learning opportunities to Calgary families. We have been both pioneers and leaders in the child care and family services field since 1969.

Our seven (7) programs include six (6) group child care centres, one (1) out of school child care centres, and approximately forty (40) Calgary family day homes (actual numbers can vary). We serve the child care needs of children from young infants to school age.

Kids@ Churchill Park's child care programs are provincially licensed. We work hard to exceed provincial standards in all areas. We invest in quality programs and services including enhanced food and nutrition programming, regular outings and extras that enhance child development, and rich educational programs and a current curriculum that build upon the imagination and potential of each child.

Our Vision

Where Igniting Children's Potential is Our Passion!

Mission Statement

We are a non-profit community organization where 100% of resources are re-invested in your children to nurture curious mind, healthy bodies and happy hearts.

Values

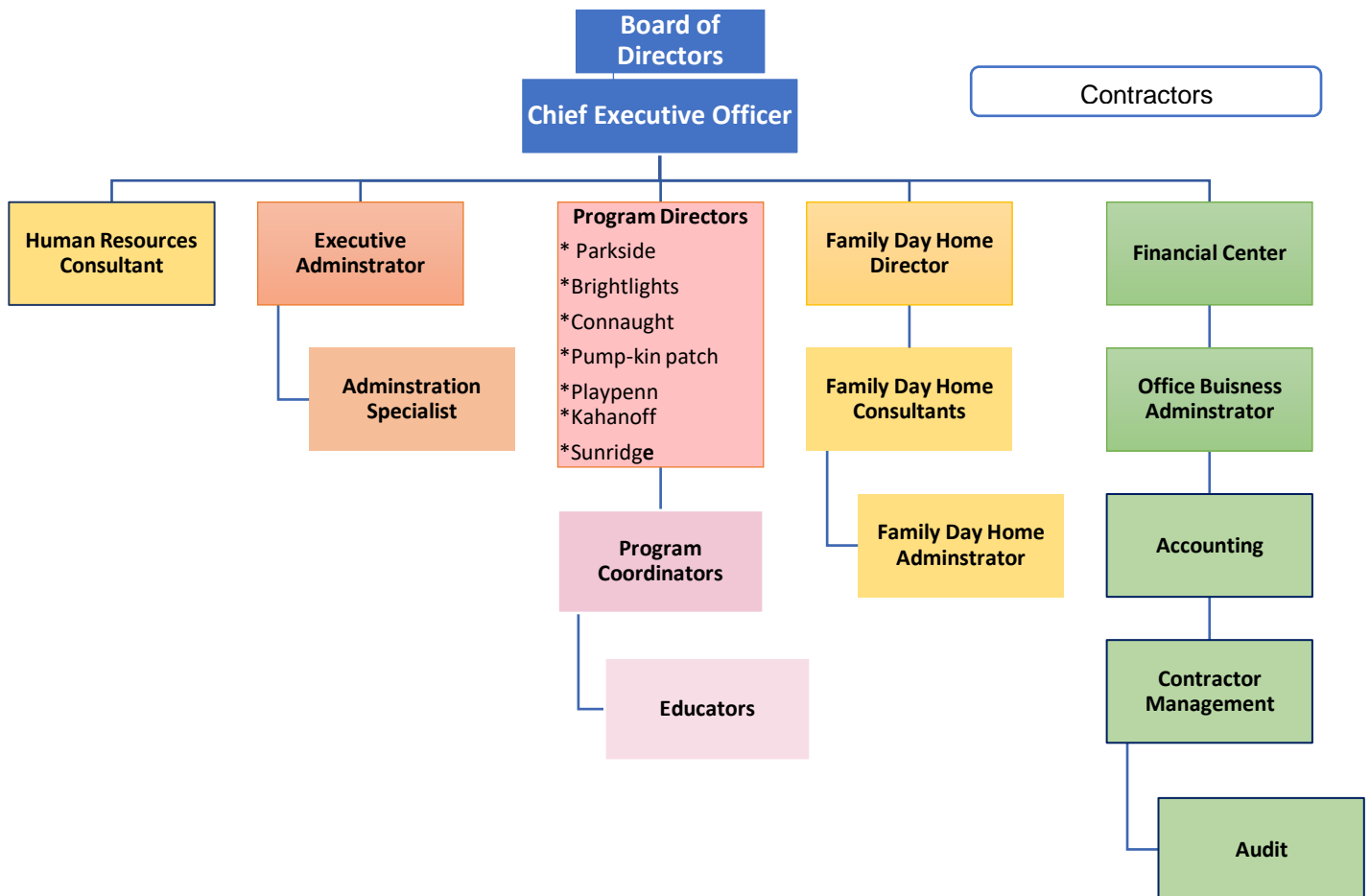
- ☀ **Accountable** and **Trustworthy**
- ☀ **Togetherness** – Lift each other and build a team dedicated to service
- ☀ **Communicate with Authenticity** – Connect with openness, transparency, and respect to create genuine relationships
- ☀ **Passionate** and **Positive Can-Do Attitude**
- ☀ **Co-Lead** and **Commit to Learning** – Seek and respect different perspectives, commit to move forward, and create incredible outcomes for all
- ☀ Always choose **Compassion** and **Kindness** to create a culture of warmth and belonging
- ☀ Stay **Humble** and have **Fun!**

Our Team

Highly trained, supported and passionate staff are the key resources for igniting children's potential.

Our Educators are deeply committed to their own professional learning so that they can continue to offer the highest level of current child care practices in Calgary.

For a current list of our team, please go to <https://www.churchillpark.ca/our-team/>



Board of Directors

Kids@ Churchill Park has a dedicated and talented volunteer Board of Directors sharing a common vision and goal for CHP – to create a place like no other – a place where childcare professionals collaborate with families and the larger community to ensure children are better ready for life.

The Executive team is made up of our Chief Executive Officer, Human Resources Consultant, Director of Finance, Program Directors, Executive Administrator and Office, and Finance Administrator.

Centre Directors

Each licensed child care centres include a Program Director, Program Coordinator, and team of professional Educators.

Child Care Staff

The Educators employed at Pump-kin Patch Child Care include qualified Early Childhood Educators, who fulfil the requirements for Primary Educators in each program group. The expectation for the Educators is to provide quality, professional, learning experiences for children and families, and to respond to each child respectfully and thoughtfully. Team Supports complement the team of Educators by providing Educator coverage, enhancing groups by providing additional support, and offer general program support. On call staff provide occasional child care in the absence of regular staff.

Staff will be required to provide, upon employment and at renewal dates, evidence of provincial Child Development certification, a positive criminal record clearance including vulnerable sector search, approved first aid, medical clearance, and evidence on-going professional training. Staffs' names and credentials are posted in the centre for parent information. Newly hired staff are oriented into a position prior to having unsupervised access to children in care.

The children are provided with a morning snack, hot lunch, and an afternoon snack. Our menu is planned and prepared by qualified cooks at our centralized kitchen (Sunridge location) and then catered to the centre.

Licensing Legislation and Program Standards

As licensed child care programs at Kids@ Churchill Park child care centres maintain a Provincial Child Care license in good standing in accordance with the Alberta Child Care Licensing Act and pursuant Regulation. Inspection reports are posted on the Ministry of Human Services website and in the centres.

The child care centres are also inspected by AB Health and the Calgary Fire Department.

Capacity

The maximum licensed capacity at Pump-kin Patch Child Care is ninety eight (98) children from infants to 72 months (not yet in grade 1).

Hours of Operation

The hours of operation at Pump-kin Patch Child Care are **7:15am to 5:30pm** daily. The hours are designed so that a child's attendance coincides with the staff schedules. Overnight care will not be provided. Transportation to and from child care will be the responsibility of the parent/guardian.

The program is closed on all statutory holidays, and annual Professional Growth Day, which falls on September 30th.

Child Care Setting

Pumpkin Patch Child Care is designed to welcome children and parents into a comfortable, respectful, nurturing child and family friendly environment. The space allows children the freedom to be who they are, while inviting parental involvement to create a community. The setting includes 7 child program rooms, indoor gym, outdoor play space divided for younger and older children (program provides schedule for each room to have access to the playground), an office, a staff room, and storage areas.

Each program room is designed, furnished, and set up for the age and development of children in attendance. The space provides opportunities for independent exploration and choice of materials, in a safe and comfortable space. Attention has been made to incorporating natural elements into the space including materials, light, and plants.

The environment will recognize and include diverse cultures and life styles representative of families utilizing care, the staff, and the community. The provision of the children's program and environment will be offered in a manner responsive and inclusive to all abilities.

Child Groups

There are five (5) program rooms available for grouping of children within Play Penn Child Care. With a full enrollment of eighty two (82) children, children are registered into one of the groups, during the hours of 8:30-4:30. During times of lower attendance at the beginning and end of each day, children may be placed into mixed-age groupings while maintaining compliance with minimum standards. **A room may have more than one group.**

Group Compositions and Ratio of Educator per Child

Infants: Infant Group Eight (8) children ages 3 months-18 months.

The group composition is dependent on ages of children enrolled. The group may have:

- A maximum of eight (8) children over 12 months with a ratio of one (1) educator to four (4) infants **OR**
- A combination of children under 12 months to 18 months no more than two (2) children less than 12 months, with a ratio of one (1) educator to four (4) infants **OR**

Infant/Toddler Mix: Group- Ten (10) children ages 12 months to 36 months

- Ratio of educator to child is determined on the higher number of infants or toddlers in the group.
- Infant ratio is 1:4, Toddler ratio is 1:6

Toddlers: Toddler Group: Twelve (12) children ages 19 months to 36 months

- Toddler ratio is 1:6

Toddler/Preschool Mix: Fourteen (14) children ages 19 months-48 months

- Ratio of educator to child is determined on the higher number of toddlers or preschool in the group.
- Toddler ratio is 1:6, preschool ratio is 1:8

Preschool: Sixteen (16) children ages 36 months-48 months

- Preschool ratio is 1:8

Preschool/Kindergarten Mix: Eighteen (18) children 36 months – 72 months (children not yet in grade one)

- Ratio of educator to child is determined on the higher number of children 36-48 months and 49-72 months
- Under 4.5 years old ratio is 1:8, Over 4.5 years old ratio is 1:10

Outdoor Activities

Pump-kin Patch Child Care believes that daily outside time is a contributor for healthier growth and development. Educators will plan and provide daily outdoor experiences for all children in care, except in cases of extreme weather conditions. An approved outdoor play-area is located in James Short Park for the Preschool age children and an off-site location for Infants and Toddlers . During the times that children are in this area, it will be enclosed for their safety.

Outdoor play will be cancelled if weather temperatures are below -12 degrees Celsius or above 27 degrees Celsius. Air quality, including smoke and UV levels, will influence outdoor opportunities. Sun safe practice including sunscreen, hats, and attention to peak sun times will be implemented.

Child Admission Information

Child care Educators promote respect for all individuals regardless of age, race, life-style, gender, culture, religion, language or ability. Pump-kin Patch Child Care and the program is barrier free and includes every child in the activities, with additional supports as needed.

Children are placed into a group that is in the best interest of the child, which may not coincide with the child's chronological age. The purpose of the placement is to allow children to grow within the comfort and familiarity of a group while facilitating attachments with Educators and developing social networks among peers. With this stability and comfort, the child is able to securely explore and learn.

What a Child Needs to Bring to Pump-kin Patch Child Care

Within the assigned program room, each child is provided with a space to store their belongings. Please limit the items the child brings to the space available. All items need to be labeled with child's name.

- All children require at least one change of clothing. The play can get messy, wet and dirty. It is in the child's interest if clothing does not prohibit exploration.
- All children require adequate outdoor gear suitable to current weather conditions. This may include hat, scarf, mitts, boots, snow pants, jacket, covered toe shoes, rain gear, sunhats, etc.
- All children require closed-toe foot wear at all times including a pair of indoor shoes. Sandals are discouraged.
- All children require a blanket for rest time. Children are also welcome to bring comfort items for rest time including stuffies, and small pillow. A labeled storage area will be provided to separately store each child's bedding.
- Toys from home are to be arranged with the child care staff. In some situations, personal items can support children transitions into new environments and/or Educators may announce special days where children are permitted to talk about a

personal item from home. These opportunities can be very beneficial for children to develop a sense of belonging in the program. The program of activities may include times for sharing special items such as “show and share.”

- Children who require diapering will need to provide disposable diapers, diaper wipes, diaper creams if needed. Pump-kin Patch Child Care does not have the facilities for managing cloth diapers. Diaper creams and other items labeled “keep out of reach of children” are to be handed directly to staff for safe storage and a completed form for administering cream is required. Each child will be provided with a labeled storage space for diapers.

Registration

A completed and signed Registration Form and the Financial Agreement are required prior to the first day of child’s care. Information gathered at registration is required by the Child Care Act to ensure the child’s care needs are accurately documented.

The child’s attendance schedule is arranged at time of registration. The Educators’ schedules and child group compositions are directly tied to children’s schedules; therefore, to maintain compliance with *Child Care Licensing Regulation*, **any changes to the child’s schedule, including drop off and pick up times, requires approval from the Program Director prior to implementation.** Parents are requested to notify the centre when their child will be absent from care including due to illness.

Gradual Entry

A *Gradual Entry Plan* for a new child provides time for the child, their parents, and the Educators to become familiar with each other. The time also allows the child an opportunity to become comfortable in a new space, and aids in the separation from the parent. A Gradual Entry plan generally starts with part-time care that increases in duration and frequency. Parent(s)’ attendance will be necessary during part of this plan to allow time for the parent to share information about their child with the Educators. The duration of the gradual entry plan is dependent upon the child’s needs but is usually over the course of 2 or 3 days for full-time care.

Transition Plan

A Transition Plan is created when the Educators are preparing a child to change program groups. The success of a transition to a new group is based on the child’s readiness, the Educators’ preparation to support the child, and the parents’ support. The child will usually visit the new group prior to determining if they are ready to transition.

The plan will be implemented with parental knowledge. Communication with parents and staff is critical to allow parents to develop relationships with the new Educators involved with their child and to have time to learn the routines and expectations of the new group. The Transition Plan allows the child to gradually make the change to the new group.

Parent Fees

A signed Financial Agreement is required upon enrollment and acts as a contract between the parent(s) and Kids@ Churchill Park.

Parent fees are calculated monthly as per the financial agreement, and due on the first of each month for that month. Parents are required to sign up for Pre-Authorized Payment. Parent fees also include centre closures noted in the annual closure schedule. There is no adjustment for times the child is absent from care such as illness or vacation as the fees are based on enrollment not attendance. Parent fees include food service and some additional activities.

Subsidy

Alberta Children's Services offers a child care subsidy program and Affordability Grants. This provides funding for eligible families towards the cost of care. Further information can be found at <http://www.child.alberta.ca> Or call 403-297-6100. Parents are responsible for the full fee unless written approval of subsidy has been received, at which time parents will be responsible for any fees not covered by the Provincial subsidy program.

Termination of Care Notice

One full calendar months' written notice must be given by either party in order to terminate or make any amendments to child's attendance or change of centre. Fees are charged per month and any refunds will only be issued for full months. Alternately for termination, one month's fee may be paid by the parent or guardian in lieu of notice.

Termination of Care

DISMISSAL/TERMINATION OF CARE: The Pump-kin Patch Child Care Center is an inclusive childcare program. We strive to support each child grow and develop in a safe, fun, and nurturing environment. We will do our very best to assist with any social, emotional or behavioral concerns that may arise. The Pump-kin Patch will work with you to find a solution and help your child feel included and accepted. However, there are times that our program may not be a good fit for your child. The safety of all children in our program is our top priority. If any child poses a threat to the safety of all children, he/she will be removed from the program without notice.

Program of Activities

Children in care at Pump-kin Patch Child Care are provided with a safe, healthy and developmentally appropriate environment coupled with caring, knowledgeable, professional educators.

The facility is intentionally designed with flexibility to accommodate a child at each stage of their development within a secure, child friendly and comfortable space. It is a priority that the children's environment be free of hazards, clean, and organized.

Developmental stages including motor skills (large and small muscles), language, intellectual, creative, social, and emotional have been considered in the program of activities. Literacy is a component found throughout the children's environment.

The Kids @ Churchill Park staff will present a respectful space for children and adults allowing a child to develop a sense of trust and security. This would include respectful

interactions between adults, and adults with children. Educators will communicate warmth and acceptance in their responses to children's feelings and needs, during activities, and daily care. Educators will respond to children's needs in timely, kind, respectful manner. Educators will listen and speak with children in a developmentally appropriate manner. Positive words of encouragement and understanding will guide communications. Children's successes will be recognized and celebrated to create positive self-esteem and encouragement. As developmentally appropriate, children will be encouraged to express feelings in socially appropriate ways. In the interim identifying feelings and modelling problem solving skills will be part of the respectful environment.

Curriculum

The Alberta Curriculum Framework builds on Early Learning and Child Care frameworks that have been developed around the world by applying foundational knowledge and understanding of how children learn and develop assisting Educators in making meaningful curriculum decisions. Children's development and interests are observed as key ingredients for provocations and planning activities. Toys and materials are used as the tools to enhancing the observations to generate further opportunities the child's interest.

While the Alberta Curriculum Framework is not mandatory in Alberta, Kids @ Churchill Park has chosen to move forward in following it, as it is considered the gold standard for early learning environments! As we are moving forward, the Educators have been working hard to incorporate this framework and document your child's learning experiences in an intentional way.

How is the Curriculum Framework different from other Early Childhood Curriculums?

- Not a step by step plan or manual telling educators what to do each day
- Is not a list of ages and stages
- Not pre-determined outcomes
- Is 'Child initiated, and Educator framed' & developed with children's learning goals in mind
- Based on play by providing invitations for children to extend their learning and interests
- Encourages Educators to co-create **responsive environments** and places of meaning and belonging for children to develop a sense of self, learn, and grow
- **Flexible and responsive** to children & family's needs

How can you learn more about the Curriculum Framework?

- On Hi Mama
- On the Living walls or program planning sheets in classrooms
- When talking with Educators & Managers
- News bulletins & monthly newsletters
- Our Churchill Park Family Care Society Facebook Page
- <http://childcareframework.com>

Ages and Stages Questionnaires and Nipissing Developmental Screen

The Educators will use developmental screening tools current to the child care profession to track a child's developmental growth. The results will be shared with parents at parent/Educator meetings, and will be used to plan activities for your child.

During the course of the day, Educators will observe and document each child's experiences. These observations may be written and/or photographed, and obtained from the child's experiences. Observations will be summarized and shared with parents through HiMama.

Development Enhancement

When an Educator or a parent expresses concerns about an area in the progress of a child's development, the Program Director and/or Educator will meet with the parents to discuss the concerns. It may be determined that changes are required in the child's program, or it may be determined that extra support is required from an outside agency to assist in the child's success. Parental participation and communication are necessary in determining the program of activities and goal setting that best meets the needs of the child. Written parental consent is required prior to referring a child to an agency.

Resources

The Lead Foundation is a team of professionals that has collaborated with Kids@ Churchill Park. They will focus on screening children within the program to identify early on those children with developmental delays to ensure they receive the resources they require to reach their full potential.

1. Written Information

Resources for assisting in the identification of a child's development may include:

- Ages and Stages Questionnaire
- Ages and Stages Questionnaire, Social and Emotional
- Nipissing Rating Scales
- Behavior Assessment System for Children
- Observation Records

2. Agencies

With written parental consent, a child may be referred to an outside agency to support in the progression of the child's development. These agencies and what they offer are available in the Kids @ Churchill Park - Play Penn Child Care Practice Manual or from a Child Care Staff.

Parent Participation

The success of a child's experiences at the child care centre includes the collaboration and relationship between parents and the Educators when meeting the child's needs. Educators recognize and respect the primary role of parents in the care and teaching of their child and will strive to provide a program that compliments the goals that the parents have for their children.

Educators recognize that families are unique in their values, experiences, and needs for their children. Parents are encouraged to share this information with the child care staff to allow staff to provide a holistic approach to meeting the child's and family's needs in the child care program.

Family Committee

The Family Committee performs functions to enhance the child care program. These functions include assisting with centre fundraising events, assisting with special events, and

providing feedback on operations from a parent's perspective. The Committee is not responsible for policy development, operations, parent complaints/concerns, or license holder responsibilities.

Time with Your Child(ren)

Parents are encouraged to be part of their child's day at The Pump-kin Patch Patch at any time that their child is in attendance. Parents are always welcome to join the child in their child's group activities, or to present a talent or interest to the children.

Parents are asked to understand that during visits at Pump-kin Patch that the Educators' priority is attending to the needs of the children in care. Educators can arrange an appropriate time to speak with parents in a confidential environment for discussions about the child or practices as needed.

Parent Communication

Newsletters and notices will be emailed through HiMama, on the Kids@ Churchill Park Website, and may be posted in the centre with up to date information on the child care centre operations, functions, and special activities.

Family Events

Pump-kin Patch Child Care will host events for parent gatherings and information sharing, with topics related to but not limited to child health, child development, and child care information.

Parent/Educator Meetings

Educators meet and communicate with parents on a regular basis to establish goals and a program plan for the child. This time is also used for general discussion of the child's development and parent feedback of the child care service.

In respect for the child(ren) in care, we ask that to please refrain from speaking about concerns you may have with your child in the children's presence. Staff can arrange an appropriate time to speak with parents in a confidential environment.

Operational Practices

Supervision of Children

Educators supervise attending children at all times through practices that adequately ensure the health, safety, and well-being of each child.

Supervision is implemented through visual and auditory strategies such as the positioning of staff in intentional spaces of children's play, through interactions with children, and through knowledge of each child's needs and group dynamics. Children's abilities and development are considered in the implementation of supervision strategies. During higher risk activities such as outings, additional Educators will be provided to enhance the supervision of children.

Confidentiality

Pump-kin Patch Child Care recognizes the need for and respects the privacy of each family and child using the service. Information obtained about children in care and their families is held in confidence except where requested by approved authorities (licensing, police, court as well as child and Family Services).

As a parent participant in the child care centre, you will observe other children in care and staff. Please respect the privacy of every child and family by avoiding discussion of observations. If there is an observed concern of a staff's practice, please bring this concern forward as per Practice statement for Concerns/Complaints shown in this handbook.

To model respect for a child, the child care staff will not discuss concerns about the child in the child's presence or the presence of other children. Child care staff will only discuss a child in care with that child's legal parent/guardian or other centre staff.

Photographing/Filming of Children

Photographs of children are used to document and share your child's experiences.

Parent/guardian authorization is required prior to the childcare centre staff to photograph or film your child. Photographs may be shared or displayed through various forms including HiMama and posted within the centre. **Parents visiting the program may only take photos of their own children.**

Field Trips/Outings

On occasion, Educators will plan for off-site outings within the community. An off-site outing is any area beyond the licensed child care space (beyond the outdoor play area). Outings are done with intention, thought, and a plan. Parents are always welcome to join their child on an outing.

Child care staff implement procedures necessary to provide a safe and positive experience during an off-site outing with the children. Neighbourhood walks and field trips require parental consent and will be within a limited area that includes sidewalks and controlled crossings. Parents will be notified in writing of the details of the outing including location, safety precautions, supervision plan, purpose, and method of transportation. Child care staff ensure that Off-Site Outing Procedures are implemented, including access to child emergency records, documented parental consent, safety awareness of outing, record of attendance, care supplies including first aid kit and medications, and purpose and appropriateness of outing for children. Unfortunately, due to our staff to child ratios, your child will not be able to opt out of a trip and remain in the centre. If you do not wish your child to attend any given excursion, please do not have your child attend the program on that day. Parents are responsible to know departure and arrival times of the field trip and to bring child on time. We will not organize arrivals or departures during field trips due to the inconvenience this may cause to other children in the group.

Children will not be transported in staff vehicle. Children will walk to outings within safe walking areas. Infants will be transported in strollers. Children may use public transit with safety guidelines and parental consent.

Respectfully Guiding Children's Behaviours

Pump-kin Patch Child Care strives to provide a safe, secure, and developmentally appropriate environment for all children in care. The outcome resulting with the child feeling valued, respected, and nurtured thereby minimizing the need for redirection of a child's behaviours.

The following is intended to provide you the parent with a description of the Guidance Practices. Child care staff are required to sign acknowledgement of the Guidance Practices upon employment, annually thereafter, and when any revisions to the Guidance Practices occur. Parents sign that they have been provided with the Guidance Practice upon registration, and when any changes occur. An email announcement will inform parents and staff of revisions to this policy.

Procedures

During those occasions when a child's actions require adult guidance, Educators provide guidance in a supportive, respectful manner that leads to a positive outcome for the child(ren) which will be reasonable in the circumstances. Proactive strategies implemented to avoid unwanted behaviours from occurring, allow the children to be successful, feel safe, and eager to explore.

Under no circumstances will Educators, with respect to a child in care, implement or threaten to implement the following strategies:

- Inflict or cause to be inflicted any form of physical punishment, verbal or physical degradation or emotional deprivation.
- Physical force such as spanking, shaking, pushing, slapping, or confinement.
- Physical restraint such as confining a child in an area, restricting a child's movement, and holding a child against a child's will.
- Emotional punishment that will ridicule, demean, insult, undermine, or humiliate a child. Deprive or threat to deprive basic needs such as food, bedding, clothing, shelter.

Placing a child on "time out" is not a strategy that will be implemented at The Pump-kin Patch. Although this type of intervention may stop the action, it may also humiliate the child, while failing to offer the child appropriate alternatives for the behaviour.

Educators implement strategies for providing successful experiences for all children in the group through knowledge and familiarity with each child's developmental level and interests. The Educators model appropriate actions in day-to-day interactions with adults and children. The modelling will demonstrate empathy, respect, and social skills for success. It is expected that all adults, while on child care premises, will adhere to the described Guidance Practices.

Discussion concerning child guidance is encouraged between parents and Educators. Open communication is the key to achieving the common goal of providing a stable and nurturing environment for the children. These discussions need to occur away from the child.

Educators are provided with on-going training for guidance strategies to ensure staff is familiar with up to date information. Parents will be offered Information Sessions and other resources on child guidance.

Daily Arrivals and Departures

Attendance Records

Upon enrolment, parents arrange hours of care for their child. Changes made to this schedule either on a temporary or permanent basis, require the Program Director's approval to ensure that sufficient staff are available, that it is in the best interest of the child, and that the group size is compliant.

Children are logged in electronically upon arrival and departure. These times must be accurate. Child care staff monitor the attendance throughout the day for accuracy. Child attendance records are maintained for two (2) years. Written documentation of each child in attendance is required at all times.

Parents are requested to notify the centre by 8:30 am, if their child will be absent from care that day.

Adults accompanying a child or picking up a child are to notify child care staff of the child's arrivals and departures. Educators will greet each child and accompanying adult upon arrivals and departures.

Parking

Parking is available for drop off and pick up in the designated stalls on P2 level. A parking tag is required. Please be aware of children moving about when arriving and leaving.

Late Pick Up and Late Fee

On those occasions when you, the parent, or a pick-up person is going to be delayed in the arranged pick up time, parents are to notify the Manager prior to the expected time of pick up. In order to accommodate an extended day of care, the Program Manager will need to ensure there are staff in place and that the child needs are accommodated for the late pick up. It is the responsibility of each parent, to ensure that their child is picked up by a responsible adult by no later than 5:30 PM. Parents whose children are picked up after 5:30 PM may be assessed a late pick up penalty in the amount of \$25. If the child is picked up at after 5:45 PM, then it will be \$50.00. Late fees are to be paid directly to the staff in the program.

If a child is not picked up by the scheduled time, and an authorized person has not notified child care staff of a delay, the staff will attempt to contact the parents/guardians. Failing to reach a parent/guardian, staff will attempt to reach the emergency contact, or someone from the list of identified people authorized to pick the child up. If all efforts are unsuccessful, the staff person in charge may call the police and/or Calgary Child and Family Services Authority for assistance in the matter.

Safe Release of Child

For security reasons, only those parents who have children in care will have access to Pump-kin Patch. An alternate person, who is visiting or picking up the child, requires permission from child

care staff at the entrance prior to entering the centre. Identification may be required prior to permitting entry. Parents are requested to refrain from admitting other adults into the facility for the safety of children in care.

A child will only be released to those persons named on the child's registration form. Written authorization from the parent is required prior to a change in this arrangement.

If an authorized pick up person appears to be unable to provide safe care to the child, child care staff may contact the police and/or contact Calgary and Area Children and Family Services Authority, if it is determined that the child needs intervention or support, or the child's safety is being compromised.

Custody

A parent who has been awarded sole custody of their child by the Courts, and does not want the non-custodial parent to access the child during child care hours, must produce a copy of the Court Order showing assigned custody or authorized restraining order, for the child's file. Child care staff cannot deny a legal parent access to their child unless there is a court order to support this action.

Healthy Practices

Preventative Health Practices

All child care employees implement procedures to provide a healthy environment for the children and staff to reduce the risk of contamination of illnesses within the child care centre. Providing children with healthy food choices, daily outdoor time, a clean eco-friendly environment, and modeling healthy practices such as Universal Precautions, are preventative strategies practiced at the Centre to promote children's good health.

Infection Control Procedures

Child care staff follow "Universal Precautions." This principle is endorsed to reduce the spread of germs and to aid in protecting all persons in the child care centre from unnecessary exposure to potentially harmful organisms.

Hand-washing is implemented for all children and staff before food activities, after toileting/diapering, after playing in sensory tables or activities, after outdoor play, after any contact with bodily fluids such as nasal discharge, after handling toxic substances, and when hands are soiled. In addition, staff will wash hands before administering medication, during care of an ill child, and after any cleaning. Child care staff will model proper hand-washing techniques and supervise child hand-washing to ensure proper practices are being used.

Sleep/Rest Time

Children exert lots of energy while at a child care centre; therefore, to meet the child's physical needs, a daily quiet time is provided for children to relax, rest or nap. Each child is provided with a cot or crib with a sheet for this quiet time. Children are requested to bring a blanket from home and a comfort item if needed. Activities are provided for children not napping after a half hour quiet time. A collaborative plan is made between the parents and Educators for children who are transitioning out of nap time. The plan will respond to the child's sleep needs while in child care while recognizing the needs of the child's sleep patterns at home.

Snacks/Meals

Children are provided with a morning snack, lunch and afternoon snack that are of sufficient quantity, variety, and at appropriate times. All food will be prepared by Kids@ Churchill Park's Food Service staff, catered from the Sunridge location. The daily menu is posted on HiMama, and in each program room. The menu is designed to meet a portion of the child's daily nutritional requirements as described in Health Canada's Food Guide. Children are encouraged to taste each menu item, but at no time is a child forced to eat or drink. Alternate options are available for dietary and medical reasons, and on those occasions where a child dislikes the food served. Children are permitted to leave the table when finished and not have to wait for the whole group to be done.

All staff and children at the centre are seated while eating or drinking. For safety reasons, **hot beverages**, such as coffee or tea, are not permitted in the children's play areas.

Food brought from home, including bottles, need to be labeled with the child's name and date. There is no adjustment in parent fees when the food service is not used. Parents providing food from home are encouraged to use the Health Canada Food Guide to ensure the child's daily nutritional needs are being met. The child care staff will supplement the child's food needs as required. Please note there may be restrictions to food allowed in the centre due to allergies (i.e. nuts, kiwi).

Diapering, Toilet Learning

Diapering will be done as needed for each child. Parents will provide all diapering supplies. Staff will diaper children using universal precautions and required disinfecting procedures as stated by AB Health.

Diapering is done in a fun, interactive, respectful manner.

As children learn to use the toilet, a plan is developed between the Educator and the parents. Please provide lots of extra clothes. Children will be encouraged to use the toilet and never forced. Positive words of encouragement help with this new stage. At no point will a child be demeaned or shamed for an accident. By following a child's lead, the transition will be a positive and successful experience for the child.

Educators will respond in a timely and respectful manner to children who require assistance with clean up after using the toilet. It may be of help for you to provide flushable wipes for ease of cleaning. Children will be encouraged to try for themselves as they develop this skill.

Oral Care

The child care staff implement healthy dental practices with children in care.

- Children are not placed to bed with a drink including a bottle.
- Sweetened beverages including fruit juice are not served.
- Children who provide own toothbrushes and tooth paste are assisted with tooth brushing practices and tooth brushes are properly stored to prevent spread of germs.

Cleaning, Disinfecting and Sanitizing

Child care staff implement a routine cleaning schedule to disinfect the surfaces, play areas and toys/equipment, and to sanitize food service areas in order to minimize the risk of contamination from illness-causing bacteria.

Safety Checks

Child care staff conduct and record daily safety checks of the children's play areas including outside play area, and auxiliary areas. Posted checklists include inspecting for identified hazards such as tripping hazards, broken toys/equipment, appliances in disrepair or safety requirements, and cleanliness.

Smoke Free Environment

To provide children with clean breathing space and in accordance with *Child Care Licensing Regulation*, smoking is not permitted on the licensed program premises during the time that children are in care, including the outdoor play area. At no time will child care staff, volunteers, or escorts smoke where child care is being provided such as an outing.

Scents

Due to possible sensitivities to scents, it is requested that parents, children, and child care staff minimize the use of scented body products (sprays, colognes, etc.) while at Pump-kin Patch.

Eco-Friendly Practices

The child care staff implement and promote eco-friendly practices with the children's involvement. Practices include recycling materials, reducing water use, growing plants, limiting use of non-recyclable materials, minimizing use of aerosols and implementing other identified environmental health practices as they emerge. Eco-friendly practices compliment healthy practices.

Screen Time

Screen time using such as iPad or laptops maybe used for educational purpose and/or for fun activities such as celebrating a child's birthday.

Emergency Management

Security

Parents are provided with an access card to enter the child care centre, located at the back entrance. Guests entering the front entrance will ring the door bell and staff will permit access as appropriate. For the protection of the children in care, please do not share this access card.

Evacuation

In the event of an emergency evacuation, child care staff implement approved evacuation procedures posted in each room. Children and staff practice these procedures on a regular basis. The evacuation route is posted in each program room.

In the event of an evacuation, the children are evacuated to the designated Muster Point, **at bow valley square building**, which is posted in each program room.

In the event of an evacuation, parents are notified once children have been safely removed from the building. Once notified, parents may be required to pick children up from care. To ensure all children are accounted for during an evacuation, children must remain with the group until they arrive at the Muster Point and parents must notify the Educators when they have picked up their child from the Muster Point.

Unexpected Closure

In the event that Pump-kin Patch Child Care needs to close due to unexpected circumstances (furnace or plumbing not functioning, flood, gas leak, etc.) parents will be notified as soon as possible. Parents are responsible for making alternate child care arrangements unless otherwise notified.

Emergency Health Concern or Injury

If, in the judgment of the child care staff, an injury or health concern requires non-emergent medical attention, the parent/guardian or emergency contact will be notified in writing of the situation.

In the event that an injury or health concern requires immediate emergency care, an ambulance will be called. Child care staff will then notify the parent or the designated alternate contact person. In the absence of the parent/guardian, a child care staff person will accompany the child to the hospital and remain with the child until parent or guardian arrives.

III Child and Medication

When Your Child Is Ill

There will most certainly be times when your child becomes ill; therefore, it is important that parents have alternate care arrangements to allow the child time to rest and recuperate away from the group centre.

Please notify the centre when your child becomes ill and provide information on the illness so the child care staff can implement precautionary measures in reducing the spread of the illness.

When A Child Is Ill

Pump-kin Patch Child Care will implement the following practices regarding attendance and care for an ill child. The child care centre contacts the parent/guardian to immediately pick up their child from care if the child:

- Becomes ill with a fever (a temperature greater than 38 degrees Celsius), vomiting, diarrhea, and/or a new and unexplained rash or cough
- Requires greater attention than can be provided without compromising the care of the other children in the program
- Displays any other illness or symptom staff knows or believes may indicate that a child poses a health risk to other children, caregivers or staff.

A child may return to the program after 48 hours or earlier if the child's parent provides a written notice from a physician indicating that the child's illness does not pose a health risk to others at the centre, and/or if the Program Director is satisfied that a child's condition will not pose a health risk to other children or staff at the centre.

Should there be a confirmed diagnosis of a communicable illness/infestation in the child care centre; parents will be notified. Further information on a communicable illness/disease can be obtained from <https://myhealth.alberta.ca>, as listed below.

If a child becomes ill while in attendance at the centre, the child will be supervised in a quiet, comfortable area away from the group of children. The parent will be notified to immediately pick the child up from care. If the parent cannot be reached, staff will attempt to contact the emergency contact person identified on the child's registration form to arrange for the child to be picked up from care. Pump-kin Patch Child Care cannot provide the care required for an ill child to remain in attendance at the centre, and the child will be most comfortable at home.

Educators will complete an internal incident/illness form describing the signs of illness, staff's response to the ill child, as well as parent pick up time and parent signature. The Program Director will notify Alberta Health Services and/or Child Care Licensing as required for a reportable illness or injury. Educators may request a follow up phone call from a parent regarding the child's health status prior to the child returning to care.

When to Keep a Child at Home

In determining whether a child should or should not attend child care due to illness, consider the following:

- The child has an illness as described below
- The child is able to fully participate in the daily activities including outdoor time;
- The protection of other children in care from contracting the illness;
- The comfort and safety of the child who is ill; and
- The ability of the staff to provide proper care for the ill child.

Parents and educators will use the following guidelines to assess the child's health:

- a) A temperature over 100 F, 38.0 C
- b) Sore or discharging eyes or ears;
- c) A respiratory infection with profuse (green) nasal discharge;
- d) Exposure to or presence of any contagious diseases as shown below.
- e) Vomiting;
- f) Diarrhea,
- g) Inability to participate in regular programming;

A child must remain out of care if the child has been diagnosed with, but not limited to, the following:

If a child has a communicable disease, the Educator and Program Director must be notified immediately. The illness will be reported to Alberta Health Communicable Disease as required. This includes exposure to or presence of any contagious diseases such as:

whooping cough
measles
mumps
chicken pox
diphtheria
scarlet fever

hepatitis A or B
impetigo
fifth disease
rubella
strep throat
meningococcal infection

hand, foot and mouth disease
haemophilus influenza Type B
meningitis
poliomyelitis
ring worm

scabies
head lice
mononucleosis
pink eye (conjunctivitis)
roseola (baby measles)

Covid-19 and/or its subsequent variant must be followed according to the current AHS guideline for isolation.

Allergies & Illnesses

Allergies and emergency illnesses are posted in required areas to inform all necessary staff while respecting confidentiality of the child. For children who have a severe allergic reaction emergency health procedure are implemented including contacting Emergency Medical Services for medical assistance.

Administering Medications

Parents are able to come to the centre and administer medications to their children at any time.

Parents are to provide written notification to the child care staff if their child was given medications prior to arriving at child care, (such as, Tylenol, cough syrup, herbal remedies).

For the protection of children and staff at the centre, safe practices are required for the administration of medications. The required AUTHORIZATION FOR THE ADMINISTRATION OF MEDICATION FORM available from an Educator, must be completed and signed. Prior to staff accepting medication, the authorizing parent must provide this Form along with the medication in its original container.

Child care staff does not administer over the counter medications (i.e. Aspirin, cough syrup, vitamins, throat lozenges, cold capsules, etc.) except where the medication has been prescribed by a doctor, with the exception of diaper and hand creams. Child care staff does not administer medication on an “as needed” unless prescribed by a doctor with the explanation of the symptoms as well as emergency medications such as an EpiPen or Bronchodilator.

All medications must be handed directly to staff for proper storage. All medications, excluding emergency medications, will be locked at all times to reduce risk of children’s access.

Emergency Medications

Children who have a severe allergic reaction will receive immediate medical attention which will include contacting Emergency Medical Services and the child’s parent/guardian.

Emergency medication also requires an AUTHORIZATION TO ADMINISTER EMERGENCY MEDICATION FORM, including detailed instructions on the signs and symptoms of when the medication is necessary. Please note the expiration date on all emergency medication. Emergency medication will be stored in a manner that it is inaccessible to children but readily accessible to staff. Emergency medication needs and the Authorization to Administer Medication form will be updated every six (6) months.

Based on the information provided by the parent and physician, and the staffs' training, staff will determine when to administer emergency medication.

Incident Reporting

An incident is an injury, accident, illness, or serious situation involving a child(ren) in care, which requires documentation for parental information, centre review, licensing evidence, and for the child's history. In the event of an incident at the centre, the child care staff will implement the necessary steps to ensure the child's needs are met and that children's safety is attended to. All injuries to the child's head will be reported immediately to the parents.

The Educators document the nature of the incident and any action that was taken. Educators will share this information with the Program Director, and then the parent of the child involved providing the parent opportunity for written feedback on the management of the incident. The parent is requested to sign acknowledgement of the Incident Report. All Reportable Incidents are submitted in writing to Calgary and Area Child and Family Services Authority Licensing Officer as required.

Reportable incidents that will be immediately reported to Licensing include:

- An emergency evacuation;
- Unexpected program closure;
- An intruder on the program's premises;
- A serious illness or injury;
- An error in the administration of medication by a program staff or volunteer resulting in the child becoming seriously injured or ill requiring first aid, or the program requesting emergency health care and/or requires the child to remain in the hospital overnight;
- Death of a child;
- The unexpected absence of a child from a program (i.e. lost child, missing child)
- A child removed from the program by a non-custodial parent or guardian;
- An allegation of physical, sexual, emotional abuse and/or neglect of a child by a program staff member or volunteer;
- The commission by a child of an offence under the Act of Canada or Alberta;
- A child left on premises outside of the program's operating hours.

Reporting Child Abuse/Neglect

Under the provision of the *Child, Youth and Family Enhancement Act (Enhancement Act)* child care staff are legally obligated to report concerns or observations to authorities, if there are reasonable and probable grounds to believe that a child needs intervention due to suspected abuse or neglect.

If a parent/guardian of a child in care, or a child care staff member suspects on reasonable and probable grounds, that a child in care is being abused or neglected by a child care staff or the parent, the program director or staff member is legally obligated to act on that suspicion. This type of concern will be reported to Program Director. Program Director will then report to Child and Family Services at 403 297 2995 in which CFS will then advise the Program Director on the next steps.

Program Director will also notify Kids@ Churchill Park CEO and Pump-kin Patch Licensing Officer.

To report abuse/neglect of a child in care or to obtain further information contact:
Abuse Hotline at 1-800-387-KIDS (5437)

Parent Questions/Concerns/Complaints

There may be times when you have concerns or need clarification about a practice at the centre. In such cases, it is believed that through collaborative communication, a satisfactory resolution or explanation can be found. Please report concerns to the staff member involved or to the Program Director. Concerns in writing are also welcome, and will be managed in the same manner.

When discussion with an Educator or Program Director is not possible or preferred, you are welcome to share concerns with a member of the Kids@ Churchill Park CEO.

Matters that relate to the health, safety, and well-being of children in care should be brought to child care staff's attention *immediately*.

Where it is determined that the resolution to the concern was not satisfactorily addressed and it is believed that children remain at risk, contact Calgary and Area Child and Family Services Authority Licensing Officer at 403-297-7378 for further investigation.

Program Evaluation

Pump-kin Patch Child Care Educators strive to always offer current professional practices in the provision of early childhood care and education. Pump-kin Patch Child Care will continuously review the success of the program through professional assessment tools, training and resources, peer reviews, and informal observations.

General: Infant Daily Routine

Infant care requires flexibility to meet a very broad range of development and care needs within this group. The daily activities are designed to meet needs of each individual child.

During the day the following will be provided; however, the times cannot be set as each child's schedule will be unique.

7:15am - 8:30am	Arrival within a mixed age group
8:30am - 4:30pm	Children in assigned group Free play of planned activities indoors and outdoors (including music, reading, manipulatives, blocks, dramatic play, sensory activities, pushing/pulling toys, gross motor activities etc.) throughout the day Individual and Group experiences Outdoor time will be offered daily
11:30am (approximately)	Lunch is offered Snack available in morning and afternoon according to child's schedule

Rest time offered after lunch

4:30pm – 5:30pm

Children will join mixed age group for appropriate activities until departure time

5:30pm

Centre Closed

****Diapering will be done throughout the day every two (2) hours and as needed****

Each developmental area including language, gross/fine motor, cognitive, social and emotional will be addressed with each child daily, through activities, toys, and the environment.

General: Toddler Daily Routine

The times of the daily schedule for Toddlers is flexible depending on the needs of each child and the group. This schedule outlines daily activities available for the children during segments of the day. Minimal transitions occur during the day for children in this age group.

7:15am - 8:30am

Arrival within a mixed age group

8:30am - 4:30pm

Children in assigned group
Free play of planned activities indoors and outdoors (including music, reading, manipulatives, blocks, dramatic play, sensory activities, pushing/pulling toys, gross motor activities etc.) throughout the day
Individual and Group experiences
Outdoor time will be offered daily

11:30am (approximately)

Lunch is offered

Snack available in morning and afternoon according to child's schedule

Rest time offered after lunch

4:30pm – 5:30pm

Children will join mixed age group for appropriate activities until departure time

5:30pm

Centre Closed

****Diapering will be done every two (2) hours and as needed****

Each developmental area including language, gross/fine motor, cognitive, social and emotional will be addressed daily with each child through activities, toys, and the environment.

General: Preschool Daily Routine

The following will provide an overview of the children's day.
Details of the schedule will be posted in the child's program room.

7:15am - 8:30am	Arrival within a mixed age group
8:30am - 4:30pm	Children in assigned group Free play of planned activities indoors and outdoors (including music, reading, manipulatives, blocks, dramatic play, sensory activities, pushing/pulling toys, gross motor activities etc.) throughout the day Individual and Group experiences Outdoor time will be offered daily
11:30am (approximately)	Lunch is offered Snack available in morning and afternoon according to child's schedule
1:00pm – 2:30pm (approximately)	Rest time offered after lunch
4:30pm – 5:30pm	Children will join mixed age group for appropriate activities until departure time
5:30pm	Centre Closed

Each developmental area including language, gross/fine motor, cognitive, social and emotional will be addressed daily with each child through activities, toys, and the environment.

Pump-kin Patch Patch Evacuation Map

KIDS@ CHURCHILL PARK - PUMP-KIN PATCH EMERGENCY EVACUATION MAP

Bow Valley Square 205 5 Avenue SW
Phone 403-261-0621



Pump-kin Patch Patch will proceed towards Suncor tower -Plus 15 to Bow valley square building.

After Hours Emergency: 403 771 3355

Contact Information for Executive Team of Churchill Park Family Care Society: Korrie-Mae Wiszniak (403) 606-1514.

Contact Information for Licensing Officer for the Pump-kin Patch Child Care Centre Tami Overbeck 403 297 5905 intake office: 403 297 7378.

Parent Manual Review and Feedback Form

Please sign this document and return to the program for your file. I have had the opportunity to review the Pump-kin Patch Child Care Centre Parent Manual and I would like to provide the following comments, suggestions and feedback:

Helpful to add information about:

I didn't understand or needs better clarification:

General Comments:

Signature

Date

Thank you for taking the time to review our manual. We strive to keep our information comprehensive, helpful and current. Your feedback helps us to make improvements.